

W-3300 Wireless USB phone

User Manual



Contents

1. Product Introduction	2
1.1 Features	2
1.2 Packing Contents	2
1.3 System Requirements.....	2
1.4 Hardware and Button Introduction	3
1.5 LCD Description.....	4
1.6 USB Dongle LED status	5
2. Installation	5
2.1 Installing Skype Software	5
2.2 Installing the API Software	5
2.3 Installing the USB Dongle.....	7
2.4 Check Audio and Sound Device	8
3. Establishing the connection.....	9
3.1 The link status on the host computer.....	9
3.2 Power on the wireless phone handset.....	9
3.3 Standby mode.....	9
3.4 Note on wireless link.....	9
4. Function Instruction	10
4.1 Base Operator and Option	10
4.2 Calling a Skype User	10
4.3 Calling a Phone Number (Skype Out)	10
4.4 Answer a Call	11
4.5 Adjust Volume	11
4.6 Assign Speed-Dial	11
5. Skywin API Program Instruction	12
5.1 About	12
5.2 Exit	12
5.3 Select language.....	12
6. Other Internet Messenger Software Setting	12
6.1 MSM Messenger	12
6.2 Yahoo Messenger	13
7. FAQ	13
8. Specification	15

1. Product Introduction

W-3300 is a LCD wireless USB phone which designed for Skype software.

Utilizing RF 2.4GHz radio frequency , W-3300 Phone allows you to freely roam around when making Skype calls over the Internet

You may control the Skype software just only press the keys of the phone. Through the keypad, it will operate the dialing function, selecting the phone list. Beside, the echo-eliminating technology will improve the voice quality.

The wireless phone handset is paired with one transceiver dongle. Just plug the dongle to your computer , install the software and it's ready to use.

1.1 Features

- LCD display caller ID contact lists and calling lists and multiple language
- Supports USB 1.1/compatible with USB 2.0 or higher specification
- Using Adaptive frequency hopping (AFH) solution to mitigate radio interference in 2.4GHz frequency band
- Built in hot key functions to operate Skype software as easy as dialing a normal telephone
- Skype hot keys: Up , Down , 0 ~ 9 , * , # , Dial , Hang Up , Hold , Tab
- Echo-eliminating for better sound quality
- Buzzer function for incoming call alerts
- Fashion look and human design
- 5 types of hold music and 10 types of ringers
- Using Nokia compatible (6100) Li. battery
- rechargeable via USB

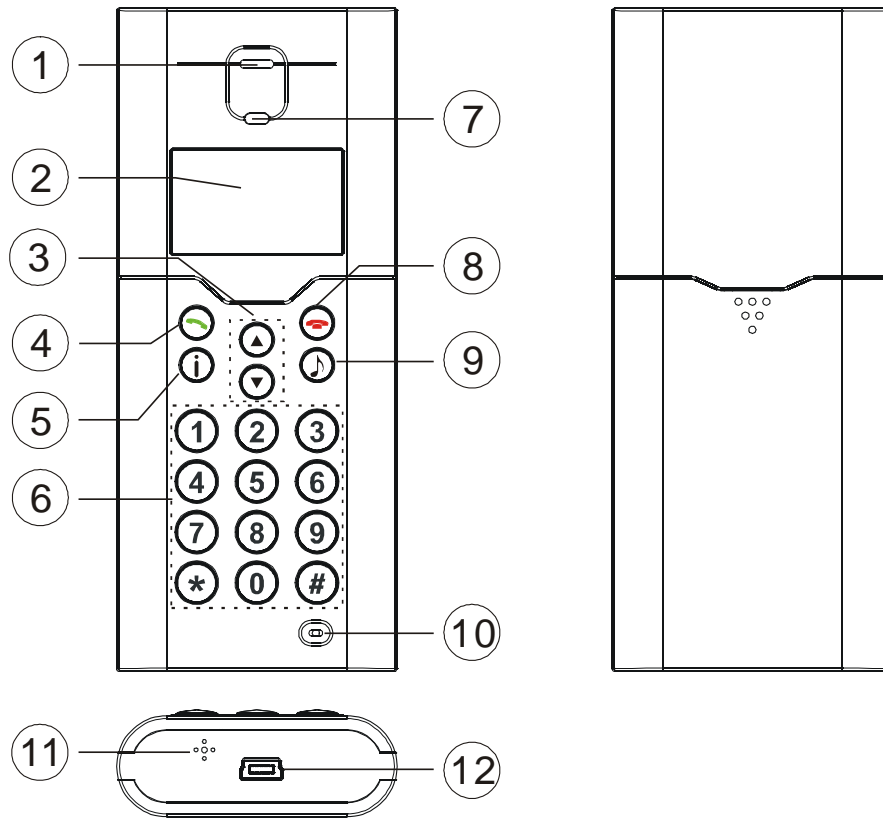
1.2 Packing Contents

- W-3300 Wireless USB phone x 1
- Installation CD x 1 (API Software and user manual)
- User Manual x 1
- USB charge cable x 1
- USB Dongle x1
- Quick Installation Guide x1

1.3 System Requirements

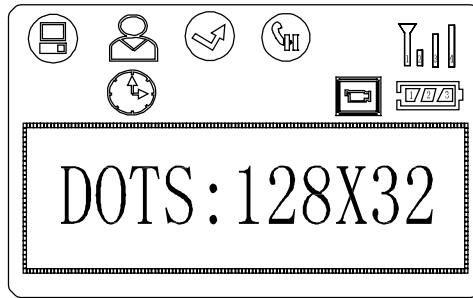
PC running Window 2000 SP4 or Microsoft Window XP SP2 or over and Direct X 9.0C or over


















1.4 Hardware and Button Introduction





1	Speaker	Speaker	
2	Graphic LCD Screen	Display information of Skype	
3	Up Down Button	Select list of contact list, missed call list, called list	
4	Dial	Off-hook	Make or answer a call
		Enter	Sub-menu entering
		Confirm	For option setting
5	Skype table	Skype table hot key	
6	Number Button	Skype out dialer button	
7	LED	Ringing LED	
8	Hang up	On-hook	hang-up a call
		Cancel	Escape sub-menu
		Clear	Press & hold to delete all dialed numbers
Press to delete one dialed number			
9	Hold	Skype hold or mute hot key	
10	Microphone	Microphone	
11	Buzzer	Incoming call ringer	
12	Mini USB slot	Plug USB cable and connect to PC USB port (charger the battery).	

1.5 LCD Description



	<p>Show Contact List User Name / Alias Name / Time / Day</p>
<ul style="list-style-type: none"> *  key to select last / next user. *  key to see this user's Mobile / Home / Office number. *  key to make a phone call. 	
	<p>Show Missed Call List User Name / Alias Name.</p>
<ul style="list-style-type: none"> *  key to select last / next user. *  Key to see this user's mobile / home / office number. *  key to make a phone call. 	
	<p>Show Call List User Name / Alias Name.</p>
<ul style="list-style-type: none"> *  key to select next / last user. *  key to see this user's mobile / home / office number. *  key to make a phone call. 	
	<p>Option menu</p>
<ul style="list-style-type: none"> * VOL SET → 8 level (0~7) * HOLD SET → 5 melodies + Mute * RING SET → 10 melodies + PC ring tone * KEYTONE → Key Tone On / Off 	
	<p>Hold</p>
<ul style="list-style-type: none"> * Click  to hold the call, then click  to talk. 	
	<p>Skywin availability</p>

	RF signal availability
	Battery level

1.6 USB Dongle LED Status

The USB Dongle's LED light when plug to a power on computer

The LED will blink every three seconds in standby mode or RF link disconnected.

The LED will solidly light when RF link

2 Installation

2.1 Installing Skype Software

If Skype is not yet installed on your computer, please download the latest version of the software from <http://www.skype.com> .

Double-click the installation file you've downloaded and then follow the on-screen prompts to complete the installation.

If you have any installation problem about Skype, please refer to Q&A on Skype Website.

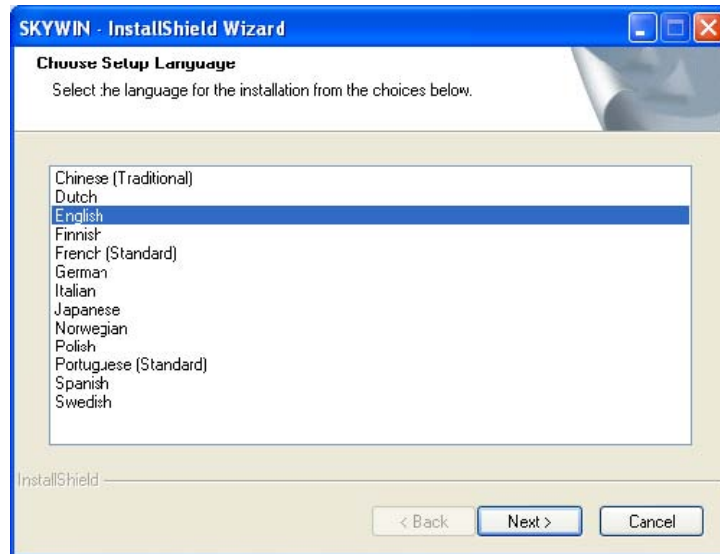
2.2 Installing the API Software

1. Install the Utility CD into your computer's CD-ROM drive.

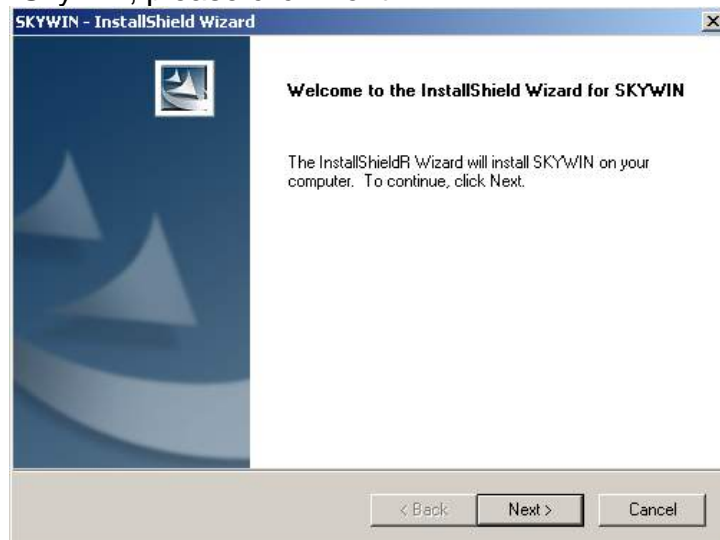


2. Click on **INSTALL USB PHONE DRIVE** to start the installation.

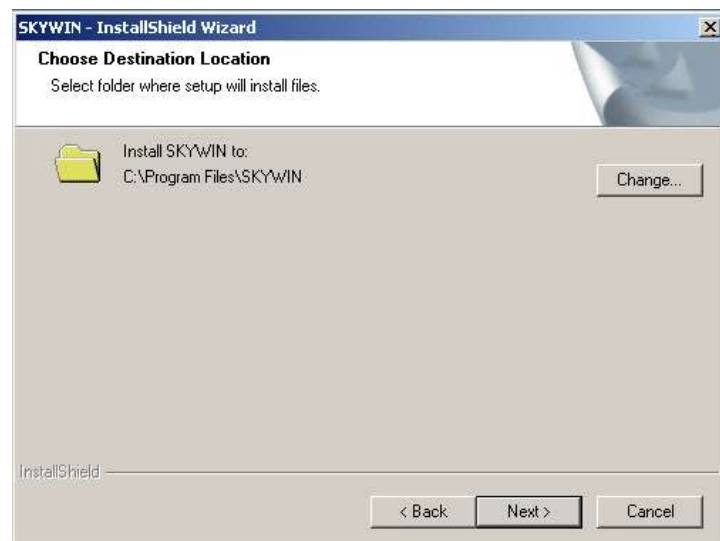
3. Choose to install languages, please click **Next**.



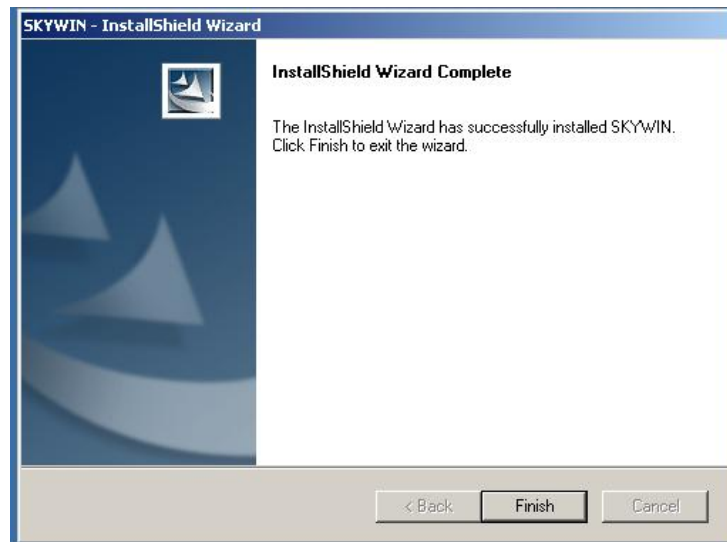
4. Ready to install SkyWin, please click **Next**.



5. Click **Next** to install or click **Change** to change destination folder first.



6. Click **Finish** button to complete installation.



7. Click SkyWin icon on the desktop to start the program.



2.3 Installation the USB Dongle

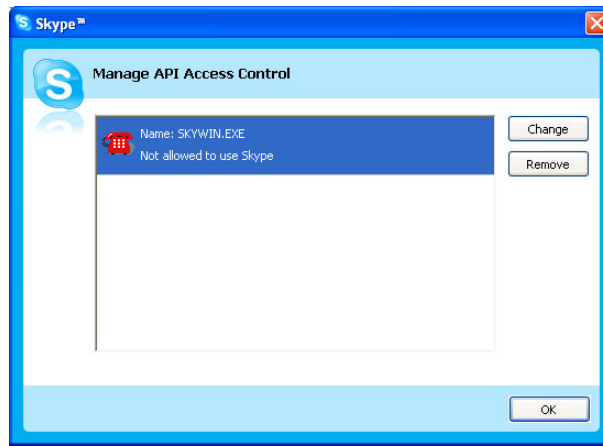
Please plug W-3300 USB dongle to the computer's USB port.

Your computer will automatically install Windows built-in driver. When the screen appears "Another program wants to use Skype". Select "Allow this program to use Skype" and click **OK** button.



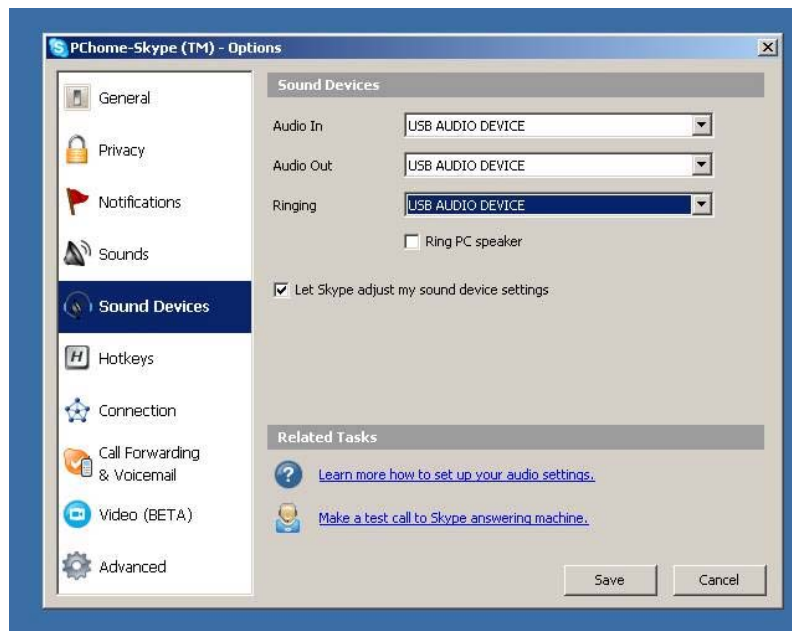
Note:

If you accidentally select the "Do not allow this program to use Skype" option, open Skype window and take these steps: Click **Tools** → **Options** → **Privacy** → **Manage other programs' access to Skype**, Select "SKYWIN.EXE" and click "Change", then re-select a proper option to let the provided program access Skype.



2.4 Check Audio and Sound Device

Open Skype window, click **Tools**→**Options**→**Sound Devices**. In the items “Audio In” and “Audio Out”, please select to **USB AUDIO DEVICE**, then click **Save**.







3. Establishing the Connection


Before you start to use the phone, you should first establish the link between the wireless phone and the dongle.



3.1 The link status on the host computer

When you finish installing the Skywin API software, the red telephone will show in the system tray. The icon display different status as follows.

	The USB dongle is plugged .The Skywin working and Skype On-line
	Can't Find USB dongle have plugged
	Can't Find Skype
	Skype Isn't installed



3.2 Power on the wireless phone handset

To power on the wireless phone, long press the Dial () key until the main screen appears on the display.

When starting up your wireless phone, the signal indicator  and PC indicator  should be displayed on the wireless phone's LCD. Your Skype name and the time of the computer plugged with the dongle should also be displayed.

3.3 Standby mode

The  and  indicators disappeared ?

The  and  indicators will disappear in standby mode. If not operated for 20 seconds, the wireless phone automatically enters standby mode and the RF iink is temporarily disconnected.

3.4 Note on wireless link



Your wireless phone and dongle are packaged as an exclusive pair. They share a unique ID to communicate only to each other.





Currently up to 7 pairs of wireless phone and dongle can co-exist within one radio range.

The maximum outdoor wireless range is about 30 meters while indoor range is about 15 meters in an open-air environment. If you cannot make the link, move the wireless phone closer to the dongle

4 Function Instruction

4.1 Base Operator and Option




In initial mode. Press **Dial** () for entering the skype table mode, **Hang up** () for quit.


Press () () select Skype table , Press **Dial** () to enter the table , **Hang up** () for quit.

CONTACT			Contact list.
MISSLIST			Missed calls.
CALLLIST			Calls list.
OPTION	SPK. VOL SET	0~7	8 level volume adjustment.
	HOLD SET	HOLD MUTE	Mute
		HOLD 01~05	5 hold melodies.
	RING SET	RING 01~10	10 types of ringers
		RING PC	Remain PC default.
	KEY TONE	TONE OFF	Turn off key tone.
		TONE ON	Turn on key tone.
Ring tone VOL set	0~5	6 ringtone meidies.	

4.2 Calling a Skype User

Press Skype hot key to select contact, miss list, call list of Skype table.

You may press () () key to scroll the list. Then press **Dial** () to dial for target user via Skype.

If you want to cancel the dialing, you may press **Hang up** () .

4.3 Calling a Phone Number (SkypeOut)


Before starting to use this function , please make sure you have paid for the service.

Further information about Skype Out, Please go to web <http://www.skype.com> .


Dial the phone number by pressing the USB phone keypads.

Press the **Dial** () to call the number.

The dial number must add "00"+ "country code" + "area code" + "number".

Example: Call to Taiwan, (2 –area code),Taipei(886-country code), telephone no. is 87654321, Press 00 886 2 87654321 then press **Dial** () .

Skype over 2.5 version can only add "0" + area code + number in same country.

Press 0 2 b7654321 then press **Dial** () in Taiwan .

4.4 Answer a Call

When the USB phone is ringing on an incoming call, Press **Dial** (📞) to answer the call.

4.5 Adjust Volume

On-line

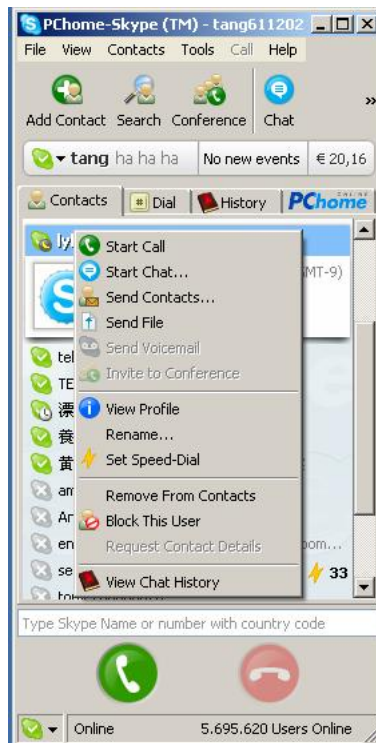
Use UP Down button to control the volume while calling to other user.

Off-line

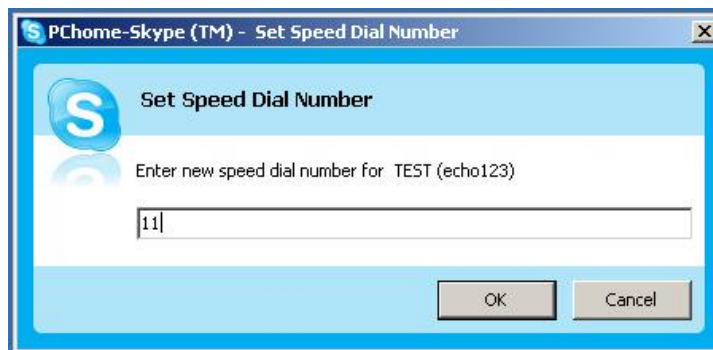
Click **Dial** (📞) → **Option** → **Vol Set** to adjust the volume.

4.6 Assign Speed-Dial

Open Skype window, right-click the user name on the contact list and select **Assign Speed-Dial**.



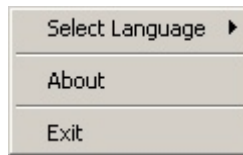
Set speed dial number, example "11" and press **OK**.



Press number "11" on W-3300, this number will be shown on the LCD screen, then press **Dial** (📞) on W-3300 to call out.

5 Skywin API Program Instruction

Right-click the W-3300 icon in the system tray, there are three items on the list.



5.1 About

The window shows the information of USB Phone API.



5.2 Exit

To quit the API program.

5.3 Select language

To select different language

6 Other Instant Messenger Software Setting

6.1 MSN Messenger

Open MSM Messenger window, Click **Tools**→**Audio and Video Setup**.... Follow the installation wizard, select to **USB AUDIO DEVICE** as audio device and test.



6.2 Yahoo Messenger

Open Yahoo Messenger, Click **Actions**→**Call Setup**.... Follow the installation wizard, select to **USB AUDIO DEVICE** as audio device and test.

After the configuration: Use the instant messenger to initiate the audio conversion on your computer side.

Press the **Dial** () key and start your conversation via the wireless phone. When the conversation ends up, press the **Hang up** () key. to save the battery power

7 FAQ

Q1. The phone doesn't work at all

A1. Make sure the battery is not running off and phone have charger .

Make sure the dongle, SkyWin and Skype communicate well .

Power Off the phone and Power on the phone .

Q2 The phone LCD keeps showing “ Linking “

A2. Move your wireless phone closer to the dongle to see if the problem is solved

Check the dongle has properly plugged

Q3. I have got noise on my phone call

Q3. Move your wireless phone closer to the dongle to see if the problem is solved

Check the battery power .

Q4. Why cannot my contact's name correctly displayed? (The language have support of the phone)

Q4. Make sure the language is correctly displayed in Skype, If not, you need to install related language on your system.

Q5. While using messenger software or Skype, the voice is played from the PC sound card instead from the USB phone.

A5. Make sure your software is configured to USB phone as audio device. Refer 4.5

Adjust Volume and **2.4 Check Audio and Sound Device.**

In MSN Messenger please refer **6.1 MSN Messenger setting.**

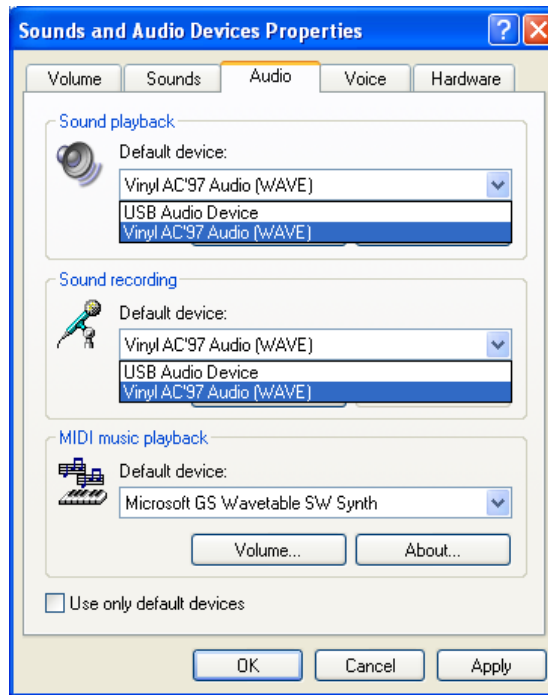
In Skype please refer **2.23 Install the API Software.**

Q6. When using the USB phone, the talker cannot hear my voice.

A6. Check if your USB phone is set to mute.

Q7. There is no voice comes out when play music?

A7. Please execute the **Control Panel→Sound and Audio Devices**, set the default device of **Sound playback** and **Sound Recording** to PC's sound card, it shown as below:



8 Specification

Support OS	Windows 2000 SP4 / XP SP2 or over
RF Operation frequency	2.4GHZ Radio Frequency Technology
RF Operating range	Max. indoor 15 meters outdoor 30 msters
RF Operating Channels	79 channels
Dongle Interface	USB 1.1 (A type)
Audio Frequency	100 Hz to 8KHz
Signal / Noise Distortion	85 dB
Battery capacity	600 mAH Li battery
Battery life	Stanby 50 hours , continuous use 5 hours
Battery charger	DC 5 V , USB power , USB mini B type connector
Dongle Power Requirement	DC 5V
Dongle Current Consumption	90mA
Dongle Power Consumption	0.45 Watt
Operate Temperature	0°C to 40°C
Storage Temperature	-10°C to 60°C
Operate Humidity	< 90%
Storage Humidity	< 95%
Dimension	120mm(H) x 50mm(W) x 18mm(D)
Weight	83.5g (Main unit without cable)