

# W-3400 Wireless USB phone

## User Manual



## Contents

---

1. Product Introduction .....	2
1.1 Features .....	2
1.2 Packing Contents .....	2
1.3 System Requirements.....	2
1.4 Hardware and Button Introduction .....	3
1.5 LCD Description.....	4
1.6 USB Dongle LED status .....	5
2. Installation .....	5
2.1 Installing Skype Software .....	5
2.2 Installing the API Software .....	5
2.3 Installing the USB Dongle.....	7
2.4 Check Audio and Sound Device .....	9
3. Establishing the connection.....	9
3.1 The link status on the host computer.....	9
3.2 Power on the wireless phone .....	9
3.3 Standby mode.....	10
3.4 Note on wireless link.....	10
4. Function Instruction .....	10
4.1 Base Operator and Option .....	10
4.2 Calling a Skype User .....	11
4.3 Calling a Phone Number ( Skype Out ) .....	11
4.4 Answer a Call .....	11
4.5 Adjust Volume .....	11
4.6 Assign Speed-Dial .....	11
5. Skywin API Program Instruction .....	12
5.1 Select language.....	13
5.2 About.....	13
5.3 Exit.....	13
6. Other Internet Messenger Software Setting .....	13
6.1 MSM Messenger .....	13
6.2 Yahoo Messenger .....	13
7. FAQ .....	14
8. Specification .....	15

# 1. Product Introduction

W-3400 is a LCD wireless USB phone which designed for Skype software.

Utilizing RF 2.4GHz radio frequency, W-3400 Phone allows you to freely roam around when making Skype calls over the Internet

You may control the Skype via W-3400. Through its keypad, you can operate the dialing function and select any receiver from your phone list. Beside, the voice quality of W-3400 is highly improved by echo-eliminating technology.

The wireless phone handset is paired with a transceiver dongle. Users just need to plug the dongle on your computer's USB port, and install the software driver. Then W-3400 is ready to use.

## 1.1 Features

- LCD display caller ID contact lists and calling lists with multiple languages.
- Support USB 1.1/compatible with USB 2.0 or higher specifications.
- Use Adaptive frequency hopping (AFH) solution to mitigate radio interference in 2.4GHz frequency band.
- Built-in hot key functions to operate Skype as easy as dialing with a traditional telephone.
- Skype hot keys: Up , Down , 0 ~ 9 , \* , # , Dial , Hang Up , Hold , and Tab.
- Echo-eliminating for better sound quality.
- Buzzer function for incoming call alerts.
- Fashion design.
- 5 types of holding music and 10 types of ring-tones.
- Using Nokia compatible (6100) Li. Battery.
- Charge via USB.

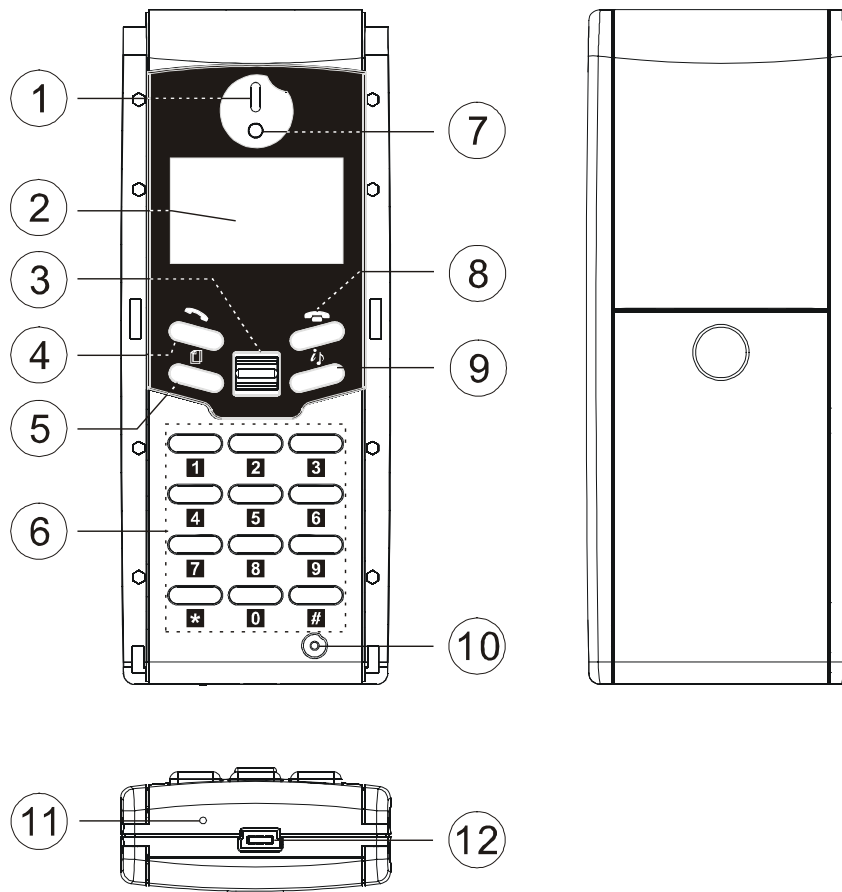
## 1.2 Packing Contents

- W-3400 Wireless USB phone x 1
- Installation CD x 1 ( API Software and user manual )
- USB charge cable x 1
- USB Dongle x1
- Quick Installation Guide x1
- 3.6V 600mAh Li. battery x1

## 1.3 System Requirements

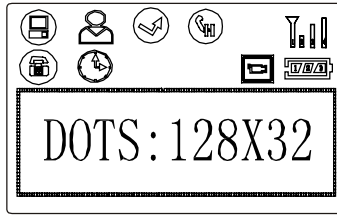
PC running Window 2000 SP4 or Microsoft Window XP SP2 or over and Direct X 9.0C or over.


















## 1.4 Hardware and Button Introduction

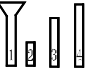

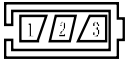


1	<b>Speaker</b>	Speaker	
2	<b>Graphic LCD Screen</b>	Display information of Skype	
3	<b>Up Down Button</b>	Select list of contact list, missed call list, called list	
4	<b>Dial</b>	Power on	When power off to long press the key
		Off-hook	Make or answer a call
		Enter	Sub-menu entering
		Confirm	For option setting
5	<b>Skype table</b>	Skype table hot key	
6	<b>Number Button</b>	Skype out dialer button	
7	<b>LED</b>	Ringing LED , On line LED	
8	<b>Hang up</b>	Power off	While power on, keep pressing the
		On-hook	hang-up a call
		Cancel	Escape sub-menu
		Clear	Press & hold to delete all dialed numbers
Press to delete one dialed number			
9	<b>Hold</b>	Skype hold or mute hot key	
	<b>Info</b>	Skype information hot key	
10	<b>Microphone</b>	Microphone	
11	<b>Buzzer</b>	Incoming call ringer	
12	<b>Mini USB slot</b>	Plug USB cable and connect to PC USB port (charger)	

## 1.5 LCD Description



	<p>Show Contact List User Name / Alias Name</p>
<ul style="list-style-type: none"> <li>*  key to select last / next user.</li> <li>*  key to see this user's Mobile / Home / Office number.</li> <li>*  key to make a phone call.</li> </ul>	
	<p>Show Missed Call List User Name / Alias Name/Time/Day.</p>
<ul style="list-style-type: none"> <li>*  key to select last / next user.</li> <li>*  Key to see this user's mobile / home / office number.</li> <li>*  key to make a phone call.</li> </ul>	
	<p>Show Call List User Name / Alias Name/Time/Day</p>
<ul style="list-style-type: none"> <li>*  key to select next / last user.</li> <li>*  key to see this user's mobile / home / office number.</li> <li>*  key to make a phone call.</li> </ul>	
	<p>Option menu</p>
<ul style="list-style-type: none"> <li>* SPEAKER VOL → 7 level ( 1~7 )</li> <li>* HOLD RINGTONE → 5 melodies + Mute</li> <li>* CALLS RINGTONE → 10 melodies</li> <li>* KEY TONE → Tone On / Off</li> <li>* HEADSET MODE → Always link on/off</li> <li>* RINGTONE VOL → 3 LEVEL</li> </ul>	
	<p>Hold</p>
<p>* Click  to hold the call, and then click  to talk.</p>	
	<p>Skywin availability</p>

	RF signal availability
	Always link
	Battery level

### 1.6 USB Dongle LED Status

The USB Dongle's LED light when plug to a power on computer

The LED will blink every three seconds in standby mode or RF link disconnected.

The LED will solidly light when RF link

## 2. Installation

### 2.1 Installing Skype Software

If Skype is not yet installed on your computer, please download the latest version of the software from <http://www.skype.com> .

Double-click the installation file you've downloaded and then follow the on-screen prompts to complete the installation.

If you have any installation problem about Skype, please refer to Q&A on Skype Website.

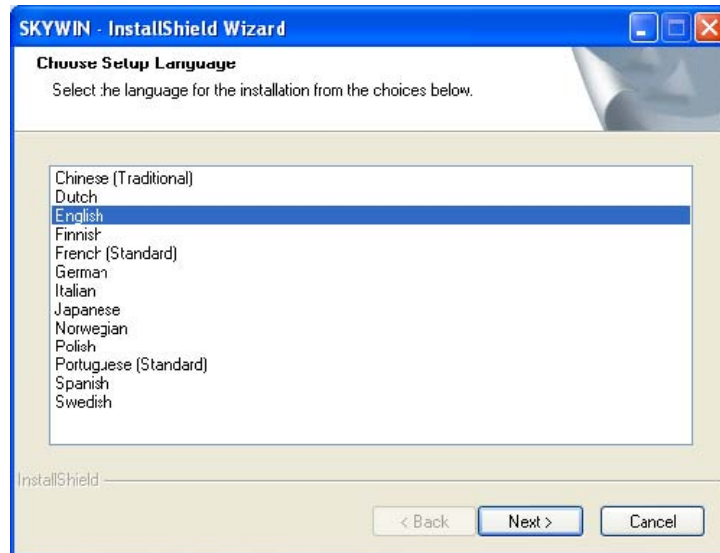
### 2.2 Installing the API Software

1. Install the Utility CD into your computer's CD-ROM device.

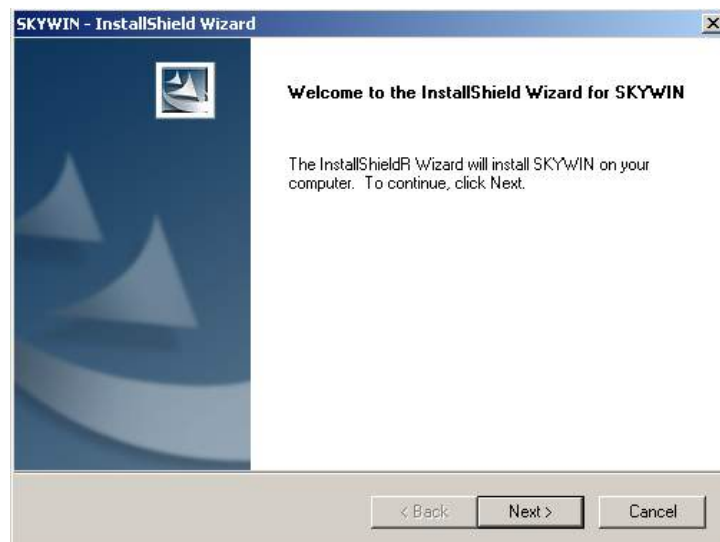


2. Click on **INSTALL USB PHONE DRIVER** to start the installation.

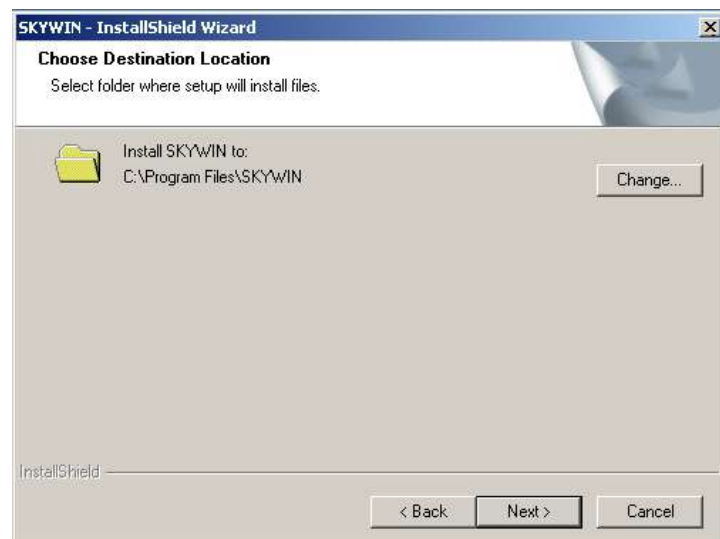
3. Choose to install languages, please click **Next**.



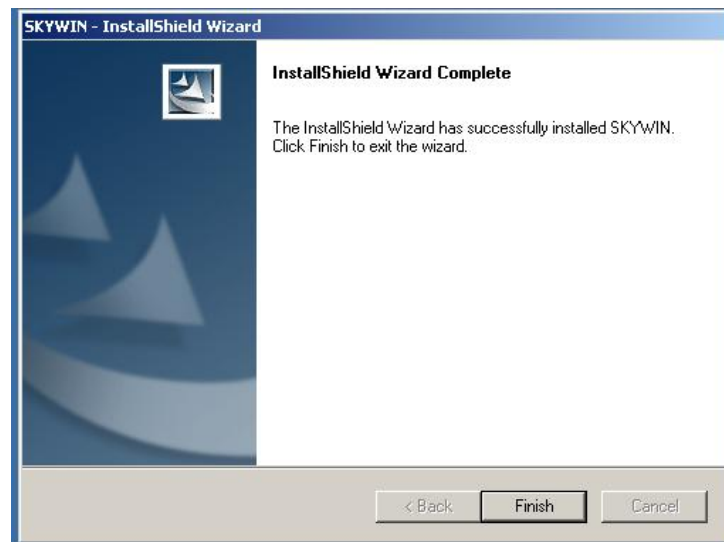
4. Ready to install SkyWin, please click **Next**.



5. Click **Next** to install or click **Change** to change destination folder first.



6. Click **Finish** button to complete installation.



7. After finished the installation process, the short-cut (SkyWin icon) will show on your desktop and run the program automatically.



### 2.3 Installation the USB Dongle

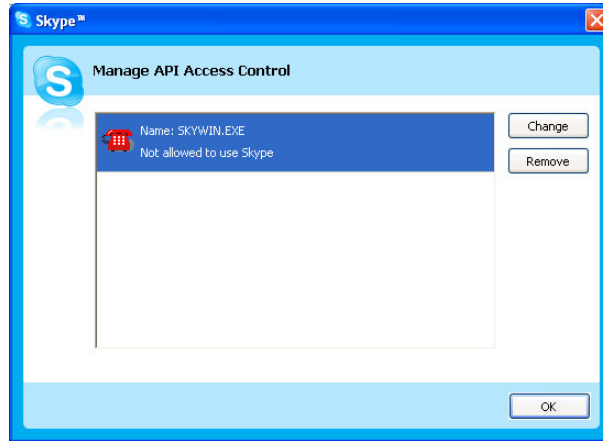
Please plug W-3400 USB dongle to the computer's USB port.

Your computer will automatically install Windows built-in driver. When the screen appears "Another program wants to use Skype". Select "Allow this program to use Skype" and click **OK** button.



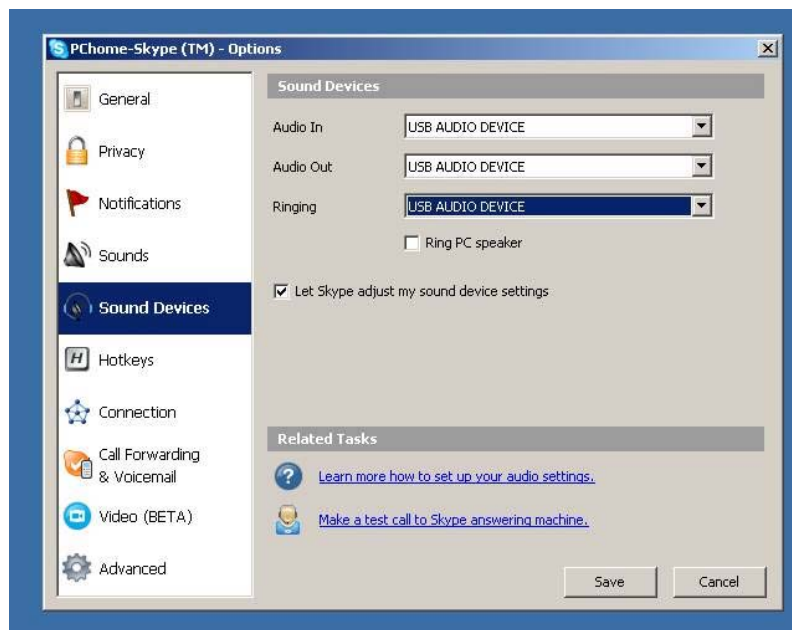
Note:

If you accidentally select the “Do not allow this program to use Skype” option , open Skype window and take these steps: Click **Tools** → **Options** → **Privacy** → **Manage other programs’ access to Skype**, Select “SKYWIN.EXE” and click “Change”, then re-select a proper option to let the provided program access Skype.



## 2.4 Check Audio and Sound Device

Open Skype window, click **Tools**→**Options**→**Sound Devices**. In the items “Audio In” and “Audio Out”, please select to **USB AUDIO DEVICE**, then click **Save**.







### 3. Establishing the Connection


Before you start to use the phone, you should first establish the link between the wireless phone and the dongle.



#### 3.1 The link status on the host computer

When you finish installing the Skywin API software, the red telephone will show in the system tray. The icon display different status as follows.

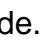
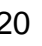
	The USB dongle is plugged .The Skywin working and Skype On-line
	Can't Find USB plugged dongle
	Can't Find Skype
	Skype Isn't installed

#### 3.2 Power on the wireless phone

To power on the wireless phone, long press the Dial (  ) key until the main screen appears on the display.

When starting up your wireless phone, the signal indicator  and PC indicator  should be displayed on the wireless phone's LCD. Your Skype name and the time of the computer plugged with the dongle should also be displayed.

#### 3.3 Standby mode

The  and  indicators will disappear in standby mode. If not operated for 20 seconds, the wireless phone automatically enters standby mode and the RF link is temporarily disconnected.

#### 3.4 Note on wireless link

Your wireless phone and dongle are packaged as an exclusive pair. They share a unique ID to communicate only to each other.

Currently up to 7 pairs of wireless phone and dongle can co-exist within one radio range.

The maximum outdoor wireless range is about 30 meters while indoor range is about 15 meters in an open-air environment. If you cannot make the link, move the wireless phone closer to the dongle.

## 4 Function Instruction

### 4.1 Base Operator and Option

In initial mode, press **Dial** (📞) for entering the skype table mode, **Hang up** (📞) for quit.

Press 📞 key select Skype table , Press **Dial** (📞) to enter the table, **Hang up** (📞) for quit.

CONTACT	Contact list.		
MISSLIST	Missed calls.		
CALLLIST	Calls list.		
OPTION	SPK. VOL	1~7	7 level volume adjustment.
	HOLD RINGTONE	HOLD MUTE	Mute
		HOLD 01~05	5 hold melodies.
	CALLS RINGTONE	RING 01~10	10 types of ringers
	KEY TONE	TONE OFF	Turn off key tone.
		TONE ON	Turn on key tone.
	Ring tone VOL	1~3	3 level volume adjustment
	HEADSET MODE	HEADSET ON	Turn on always link
HEADSET OFF		Turn off always link	

### 4.2 Calling a Skype User

Press Skype hot key to select contact, miss list, call list of Skype table.

You may press 📞 key to scroll the list. Then press **Dial** (📞) to dial for target user via Skype.

If you want to cancel the dialing, you may press **Hang up** (📞) .

### 4.3 Calling a Phone Number (SkypeOut)

Before starting to use this function, please make sure you have paid for the service.

Further information about Skype Out, Please go to web <http://www.skype.com> .

Dial the phone number by pressing the USB phone keypads.

Press the **Dial** (📞) to call the number.

The dial number must add “00”+ “country code” + “area code” + “number”.

Example: Call to Taiwan, (2 –area code), Taipei (886-country code), telephone no. is 87654321, Press 00 886 2 87654321 then press **Dial** (📞) .

Skype over 2.5 version can only add “0” + area code + number in same country.

Press 0 2 87654321 then press **Dial** (📞) in Taiwan .

#### 4.4 Answer a Call

When the USB phone is ringing on an incoming call, Press **Dial** (📞) to answer the call.

#### 4.5 Adjust Volume

##### On-line

Use “UP Down” button to control the volume while calling to other user.

##### Off-line

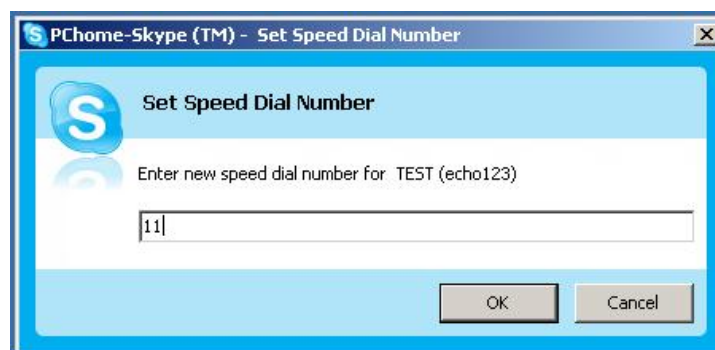
Click **Dial** (📞) → **Option** → **Speaker Vol** to adjust the volume.

#### 4.6 Assign Speed-Dial

Open Skype window, right-click the user name on the contact list and select **Assign Speed-Dial**.



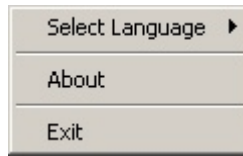
Set speed dial number, example “11” and press **OK**.



Press number “11” on W-3400, this number will be shown on the LCD screen, then press **Dial** (📞) on W-3400 to call out.

## 5 Skywin API Program Instruction

Right-click the W-3400 icon in the system tray, there are three items on the list.



### 5.1 Select language

To select different languages.

### 5.2 About

The window shows the information of USB Phone API.

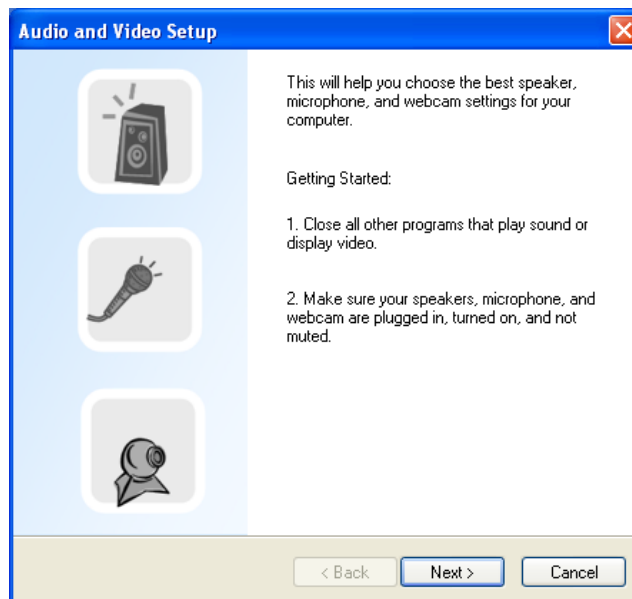
### 5.3 Exit

To quit the API program.

## 6 Other Instant Messenger Software Setting

### 6.1 MSN Messenger

Open MSM Messenger window, Click **Tools**→**Audio and Video Setup**.... Follow the installation wizard, select to **USB AUDIO DEVICE** as audio device and test.



### 6.2 Yahoo Messenger

Open Yahoo Messenger, Click **Actions**→**Call Setup**.... Follow the installation wizard, select to **USB AUDIO DEVICE** as audio device and test.

After the configuration: Use the instant messenger to initiate the audio conversion on your computer side.

Press the **Dial** (☎) key and start your conversation via the wireless phone. When the conversation ends up, press the **Hang up** (📞) key to save the battery power

## 7 FAQ

### Q1. The phone doesn't work at all

A1. Make sure the battery is not running off and phone have charger.

Make sure the dongle, SkyWin and Skype communicate well.

Power Off the phone and Power on the phone.

### Q2. The phone LCD keeps showing "Linking. "

A2. Move your wireless phone closer to the dongle to see if the problem is solved

Check the dongle has properly plugged

### Q3. I have got noise on my phone call

A3. Move your wireless phone closer to the dongle to see if the problem is solved

Check the battery power.

### Q4. Why cannot my contact's name correctly displayed? (The language has support of the phone)

A4. Make sure the language is correctly displayed in Skype, if not; you need to install related language on your system.

### Q5. While using messenger software or Skype, the voice is played from the PC sound card instead from the USB phone.

A5. Make sure your software is configured to USB phone as audio device. Refer 4.5 **Adjust Volume** and 2.4 **Check Audio and Sound Device**.

In MSN Messenger please refer **6.1 MSN Messenger setting**.

In Skype please refer **2.23 Install the API Software**.

### Q6. When using the USB phone, the talker cannot hear my voice.

A6. Check if your USB phone is set to mute.

### Q7. There is no voice comes out when play music?

A7. Please execute the **Control Panel**→**Sound and Audio Devices**, set the default device of **Sound playback** and **Sound Recording** to PC's sound card, it shown as below:



## 8 Specification

Support OS	Windows 2000 SP4 / XP SP2 or over
RF Operation frequency	2.4GHZ Radio Frequency Technology
RF Operating range	Max. indoor 15 meters outdoor 30 meters
RF Operating Channels	79 channels
Dongle Interface	USB 1.1 ( A type )
Audio Frequency	100 Hz to 8KHz
Signal / Noise Distortion	85 dB
Battery capacity	600 mAh Li battery
Battery life	Standby 50 hours , continuous use 5 hours
Battery charger	DC 5 V , USB power , USB mini B type connector
Dongle Power Requirement	DC 5V
Dongle Current Consumption	90mA
Dongle Power Consumption	0.45 Watt
Operate Temperature	0°C to 40°C
Storage Temperature	-10°C to 60°C
Operate Humidity	< 90%
Storage Humidity	< 95%
Dimension	120mm(H) x 47mm(W) x 20mm(D)
Weight	83.5g ( Main unit without cable )